

# Manual Total Stations

GM-100 Series



Powerful, precise total stations

---

# Manual Total Stations

## GM-100 Series

### Topcon GM-100 total stations – advanced design with superior technology

The GM-100 series delivers the latest technological advantages, all in a small, sleek design – you'll appreciate the benefits from the very first measurement.

Featuring a best-in-class EDM unit, the GM-100 can measure up to 6,000 m 1.5 mm + 2 ppm to standard prisms, and up to 1,000 m at an incredible 2 mm + 2 ppm accuracy in reflectorless mode.

Capture measurements faster than ever, and with a beam width of 13 mm (over 30 m), the bright red laser dot pinpoints features with ease.

### Rugged and Powerful

The GM-100's rugged IP66 rated waterproof and dustproof magnesium-alloy housing encases this exceptional EDM, advanced angle encoder system, and a lithium ion battery that provides a 28-hour power supply to help complete your projects on schedule.

---

### Fast and powerful EDM

---

### Easy access USB memory with 32 GB storage

---

### Advanced angle accuracy

---

### Long battery life – 28 hours (Eco mode)

---

### Rugged, waterproof design

---





- 1 1,000 m non-prism range
- 2 Unique IACS angle encoder system (1" and 2")
- 3 Highly visible green and red LED guidelights
- 4 Quick and easy-to-use trigger button
- 5 Laser plummet
- 6 Easy access, environmentally protected USB 2.0 slot
- 7 Tangent lock – securely holds your angle in place
- 8 Dual, graphic, backlit LCD display and keyboard (*second display is optional*)
- 9 Electronic leveling system
- 10 Exclusive “STAR-KEY” functionality
- 11 Side mount extra long-life battery

### On-board TopBasic Program

Run on-board basic layout and topo programs with the GM series. Store up to 50,000 points. Use the convenient USB transfer method to move data on and off the instrument.





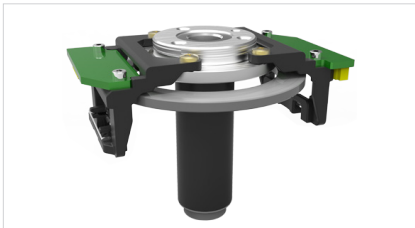
#### Ultra-powerful, advanced EDM

- 1,000 m non-prism range
- 6,000 m prism range



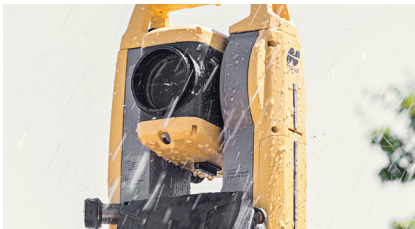
#### Easy access USB 2.0 memory

- Up to 32 GB storage
- Protected from the environments
- Compatible with industry standard thumb drives



#### Advanced angle encoder system

- Impressive 1" angle accuracy
- Incorporates exclusive IACS on 1" and 2" models (Independent Angle Calibration System)



#### Rugged, waterproof design

- Waterproof/dustproof IP66 design handles the toughest environments
- Magnesium-alloy housing providing stable angle accuracy
- Graphic display and alphanumeric keyboard (standard)



Specifications subject to change without notice.  
© 2021 Topcon Corporation. All rights reserved.  
7010-2235 B 6/21

[www.topconpositioning.com/gm-series](http://www.topconpositioning.com/gm-series)

